



**For all building and expansion joints –
pinta PE Rundschnur / round cord**

The pinta PE Rundschnur / round cord is the professional backfill for most construction and expansion joints, conforming to the building construction DIN 18540.

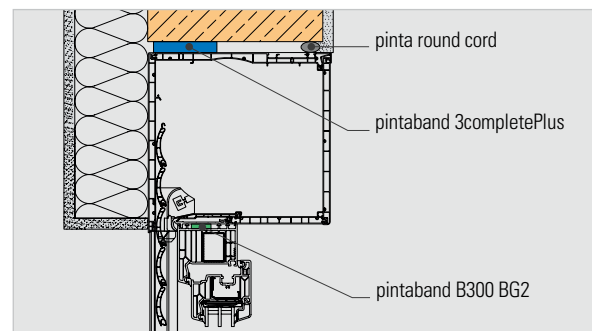
The PE joint filling profile is an elastic closed-celled polyethylene foam used as back-filling material indoors, as well as outdoors.

Area of application

- Backfill indoors and outdoors



Application sketch



>> Are you familiar with this sealing product?

- pinta cesband Rundschnur / round cord – the backfill material for the interior



Colour / Delivery forms

- anthracite
- Ø 6 – 30 mm – rolled material
- Ø 40 und 50 mm – in lengths of 1 m
- Sold only in complete units. Please ask for additional Ø.

Characteristics

- Backfill material for most constructions and expansion joints for the interior and exterior
- prevents three-point adhesion
- Ageing resistant

Product advantages

- Adhesion of sealant at joint edges is improved enormously
- applicable with absorbing materials
- vast saving potential of sealants (e.g. silicone) by reducing the joint depth

Delivery forms / Profile diameter

Profile Ø [mm]	Professional package [m]	Small dispenser package [m]
6 mm	2.500 m	7 x 100 m
10 mm	1.150 m	7 x 100 m
15 mm	550 m	4 x 100 m
20 mm	350 m	4 x 50 m
25 mm	200 m	4 x 50 m
30 mm	160 m	4 x 25 m
40 mm	180 m	–
50 mm	100 m	–

Profiles: Ø 6 – 30 mm – rolled material; Ø 40 and Ø 50 mm – in lengths of 1 m.
Sold only in complete units. Please ask for additional Ø.

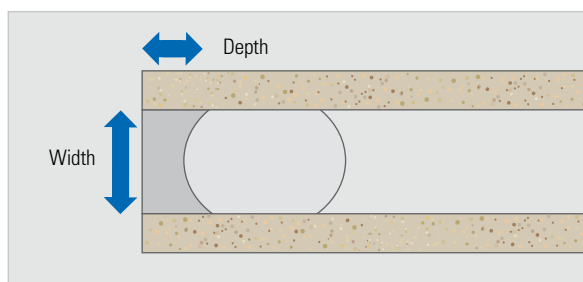
Processing

Choose the diameter of the PE joint filling profile according to the adjoining chart and press into the joint. The round cord needs to be installed in such a way that the joint depth amounts to half the width approximately. Fill the rest of the joint with a sealant and even the surface with an appropriate tool.

The ideal proportion for sealants (e.g. silicone, acrylic) of width/depth is 2:1 (at a maximum depth of 10 to 12 mm).

Examples:

PE-joint filling profile [mm]	Joint width [mm]	Joint depth [mm]
10 mm	5 – 8 mm	min. 15 mm
15 mm	8 – 12 mm	min. 20 mm
20 mm	12 – 15 mm	min. 30 mm



Copyright © pinta abdichtung gmbh. Manufacturer's specifications dated: 09/2017. Picture credits: P. 1 top left © Matthias Buehler/Fotolia.com, p. 1 top right © ArtyFotolia.com. The specifications are laboratory values, and may deviate from the actual values during installation. They do not guarantee any product properties. The detail diversity and combination possibilities cannot all be covered in this manual (Alt. brochure). The user shall be obliged to obtain accurate information. A specific work result cannot be guaranteed, due to the lack of transparency of the working conditions. We recommend test applications to ensure best possible results. Previous editions become invalid with the issue of this data sheet. Our general terms and conditions apply. All rights are reserved to modify the product at any time in order to incorporate the latest technological progress and developments (31.10.2021).

>> | Contact details

- we gladly provide individual advice – please don't hesitate to call our service hotline

pinta abdichtung gmbh
Kreuzbreite 4
31675 Bückeberg, Germany
phone +49 (0) 57 22. 89 36 - 0
fax +49 (0) 57 22. 89 36 - 16
sales@pinta-abdichtung.com
www.pinta-abdichtung.com