

Ideal for uneven surfaces in stone work

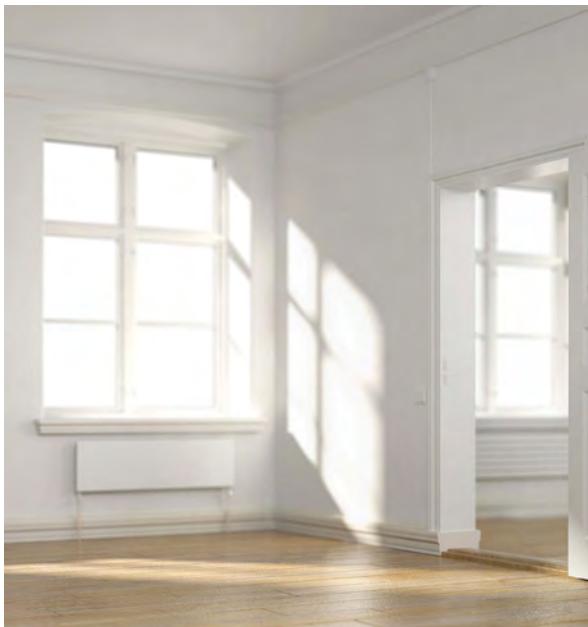


The demands made on modern building seals continually increases with regard to the environment and energy conservation. The pintaband 3complete Renova is ideally suited for primary seals of joints and uneven connections in window and façade construction – specifically in the restoration of old buildings.

>> | **Contact details**

- we gladly provide individual advice – please don't hesitate to call our service hotline

pinta abdichtung gmbh
Kreuzbreite 4
31675 Bückeberg, Germany
phone +49 (0) 57 22. 89 36 - 0
fax +49 (0) 57 22. 89 36 - 16
sales@pinta-abdichtung.com
www.pinta-abdichtung.com



**Ideal for uneven surfaces in stone work –
pintaband 3complete Renova**

The pintaband 3complete Renova is a specially impregnated pre-compressed multifunctional tape for all sectors of the window connection joint. It is utilized for wind and driving rain resistant sealing, as well as heat insulation and sound absorption.

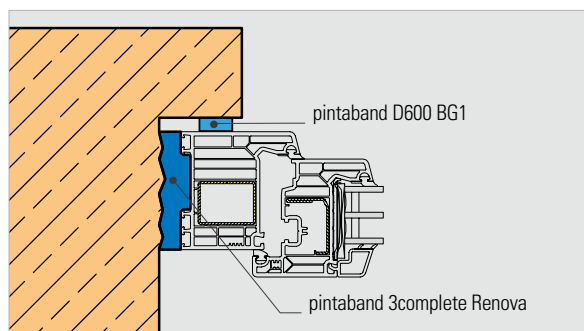
The design of the sealing tape enables the evening out of uneven surfaces in stonework. This solution is applied especially in the restoration of old buildings.

Areas of application

- Window construction
- Façade engineering
- Wood and metal construction



Application sketch



>> | **Are you familiar with the alternative?**

- pintaband 3completePlus – the multifunctional sealing tape for seals against wind and driving rain



Colour / Delivery form

- black (the inner surface is marked accordingly)
- pre-compressed on rolls (see chart with tape sizes and lengths)

Characteristics*

- heat insulating and sound absorbing (59 dB)
- Exterior/weather side: wind/driving rain resistant ≥ 600 Pa
- open to vapour diffusion according to DIN 18542
- Reaction to fire according to DIN 4102-1 B1, ABP-No. P-NDS04-1085
- Compatibility with adjoining building materials tested according to DIN 18542
- consistent quality guaranteed through regular third-party- and self-monitoring

Product advantages*

- delayed resetting – enabling ideal handling
- time- and cost saving – total sealing effect in one step using only one product
- Storage time: 1 year, dry and original packaging at $< 20^\circ\text{C}$

* The properties are partially dependent on the amount of pressure applied. See separate handling and installation instructions.

Technical data

Characteristics	Classification	Norm
Foam base	Polyurethane flexible foam	
Basis of impregnation	special flame-resistant acrylate	
Joint permeability coefficient (a-value), air-tightness	$a \leq 0.1 \text{ m}^3 / [\text{h} \cdot \text{m} \cdot (\text{daPa})^2]$	DIN EN 12114
Driving rain resistance	DIN 18542 BG1 ≥ 600 Pa	DIN EN 1027
Temperature-change resistance	-20°C to $+80^\circ\text{C}$	DIN 18542 BG1
Compatibility with other building materials	Requirements fulfilled	DIN 18542 BG1
Construction material class/reaction to fire	B1, ABP-No. P-NDS04-1085	DIN 4102-1
Water vapour permeability SD value	< 0.5 m	EN ISO 12572
Joint sound absorption, ift policy	$R_{st,w} = 59$ dB	SC-01/2:2002-09
Thermal conductivity at a tape width of 75 mm	$\lambda = 0.046 \text{ W}/(\text{m} \cdot \text{K})$ $U\text{-value} = 0.56 \text{ W}/(\text{m}^2 \cdot \text{K})$	DIN EN 12667
Resistance to condensation water	Requirements fulfilled	DIN EN 2440
Storage time	1 year, dry and original packaging at $< 20^\circ\text{C}$	

The technical data may vary, depending on the degree of pressure applied.

Tape sizes / Delivery forms

Order identification	Window construction depth	Tape width	Area of application, joint width from – to, max.	Roll length	Content per package
64 / 4 – 9	70 mm	64 mm	4 – 9 mm	8,00 m	56,00 m
64 / 6 – 16	70 mm	64 mm	6 – 16 mm	8,00 m	56,00 m
64 / 10 – 20	70 mm	64 mm	10 – 20 mm	6,00 m	42,00 m
74 / 4 – 9	80 mm	74 mm	4 – 9 mm	8,00 m	48,00 m
74 / 6 – 16	80 mm	74 mm	6 – 16 mm	8,00 m	48,00 m
74 / 10 – 20	80 mm	74 mm	10 – 20 mm	6,00 m	36,00 m
84 / 4 – 9	90 mm	84 mm	4 – 9 mm	8,00 m	40,00 m
84 / 6 – 16	90 mm	84 mm	6 – 16 mm	8,00 m	40,00 m
84 / 10 – 20	90 mm	84 mm	10 – 20 mm	6,00 m	30,00 m

Additional sizes available upon request. Dimension tolerance according to DIN 7715 P3.

>> | **Contact / Enquiry**

Installation recommendations

pintaband 3complete Renova – Preparation

To install the tapes, please have a measuring tape, knife or scissors, spatula and, if necessary, wedges at hand. Please remove release agents from the joint edges. After determining the depth of the window construction and the joint width (hereby taking into consideration the joint tolerance and joint movement) choose the appropriate tape size. To achieve the desired sealing effect of the installed tape, the areas of application (joint width) predetermined by us, may not be exceeded (check data sheet).

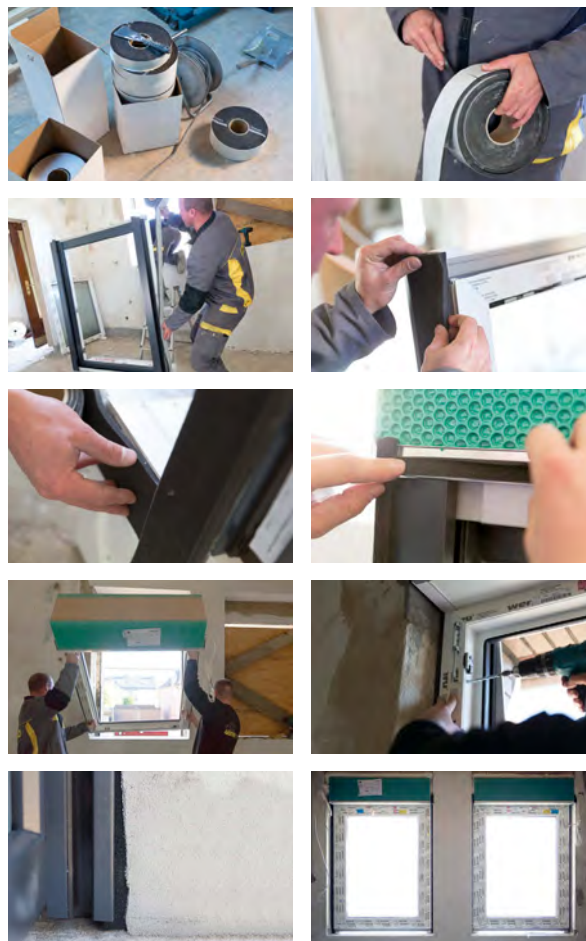
Installation process

Preparation of the tape (the marked side needs to face inwards): when cutting the tape, an allowance of no less than 1 to 2 cm per meter needs to be considered. Cut off the over-pressed front and end piece of the tape. Stick the pre-compressed tape onto the rear of the frame, starting at the bottom and working your way up. Now stick the tape onto the upper frame, making sure that the tape is not elongated.

At the end of the upper frame, press the tape against the horizontally glued tape, letting it overlap at the top for the amount of the longest joint width at least. The tape may not be attached in one piece around the frame. For security reasons, the tape must be installed at least 2 mm inwards, away from the joint front edge.

While being attached to the frame, the individual tape lengths can be extended by pushing, i.e. bumping them one against the other. Butt joints and faulty patches can be filled out with an appropriate sealing compound, e.g. pinta fenband Kleber/glue.

The expansion of the tape depends on the temperature of the joints and the environment. The tape should not be stored at temperatures > 20 °C for a longer period of time. At lower temperatures, we recommend storage of the material at a room-temperature of 20 °C for at least 24 hours before installment.



Please note

The functional efficiency of the tape can only be achieved if it is installed or applied according to our respective processing rules and was, or is, not exposed to any unforeseeable influences. Disintegration due to external influences does not fall under the warranty. All assurances relate to the application of the product under Middle European weather conditions. Please find additional important product information and processing instructions in the results and processing guidelines. Our terms of sale and delivery apply (GTC).

Copyright © pinta abdichtung gmbh. Manufacturer's specifications dated: 09/2017. Picture credits: P. 1 © Kalle Klodde/Fotolia.com, p.2 top left © PackShot/Fotolia.com, p.2 top right © PackShot/Fotolia.com. The specifications are laboratory values, and may deviate from the actual values during installation. They do not guarantee any product properties. The detail diversity and combination possibilities cannot all be covered in this manual. (Alt: brochure). The user shall be obliged to obtain accurate information. A specific work result cannot be guaranteed, due to the lack of transparency of the working conditions. We recommend test applications to ensure best possible results. Previous editions become invalid with the issue of this data sheet. Our general terms and conditions apply. All rights are reserved to modify the product at any time in order to incorporate the latest technological progress and developments.(3.10.2021).

>> | Contact details

pinta abdichtung gmbh
 Kreuzbreite 4
 31675 Bückeberg, Germany
 phone +49 (0) 57 22. 89 36 - 0
 fax +49 (0) 57 22. 89 36 - 16
 sales@pinta-abdichtung.com
 www.pinta-abdichtung.com